



# VEGETATIVE ROOFTOP

# INSTALLATION PROCESS

UPscapers



**faux vegetative roof**



# installation equipment



Safety goggles  
Hard Hat



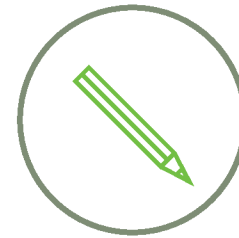
Tape measure



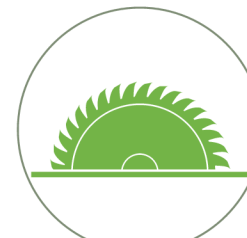
Drill  
Staple Gun  
Hog Ring Gun



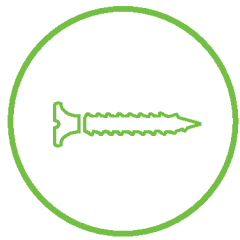
Safety  
gloves  
Long Pants



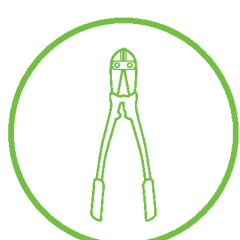
Marking Tool



Saw



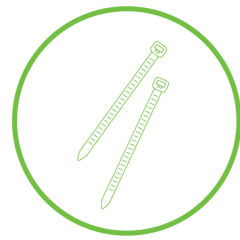
Hardware  
Screws  
Staples  
Hog Rings



Bolt cutter



Wire cutters  
Pliers



Cable ties



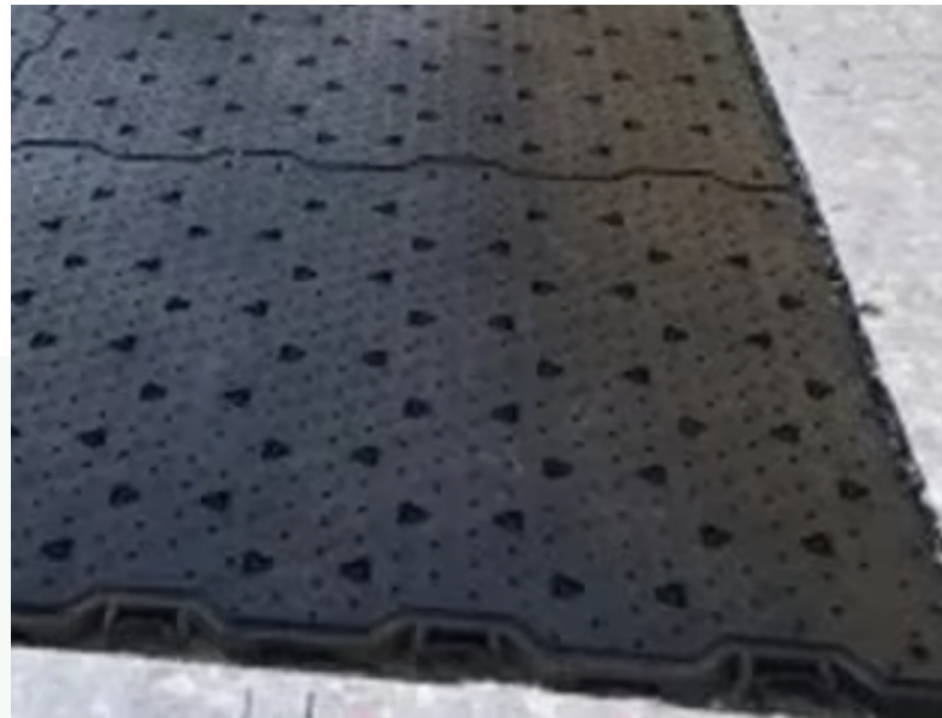
Utility Knife



# components



Layer 1:  
Geotextile



Layer 2. Interlocking  
drainage tile



Layer 3: Vegetative  
roof & finishing foliage

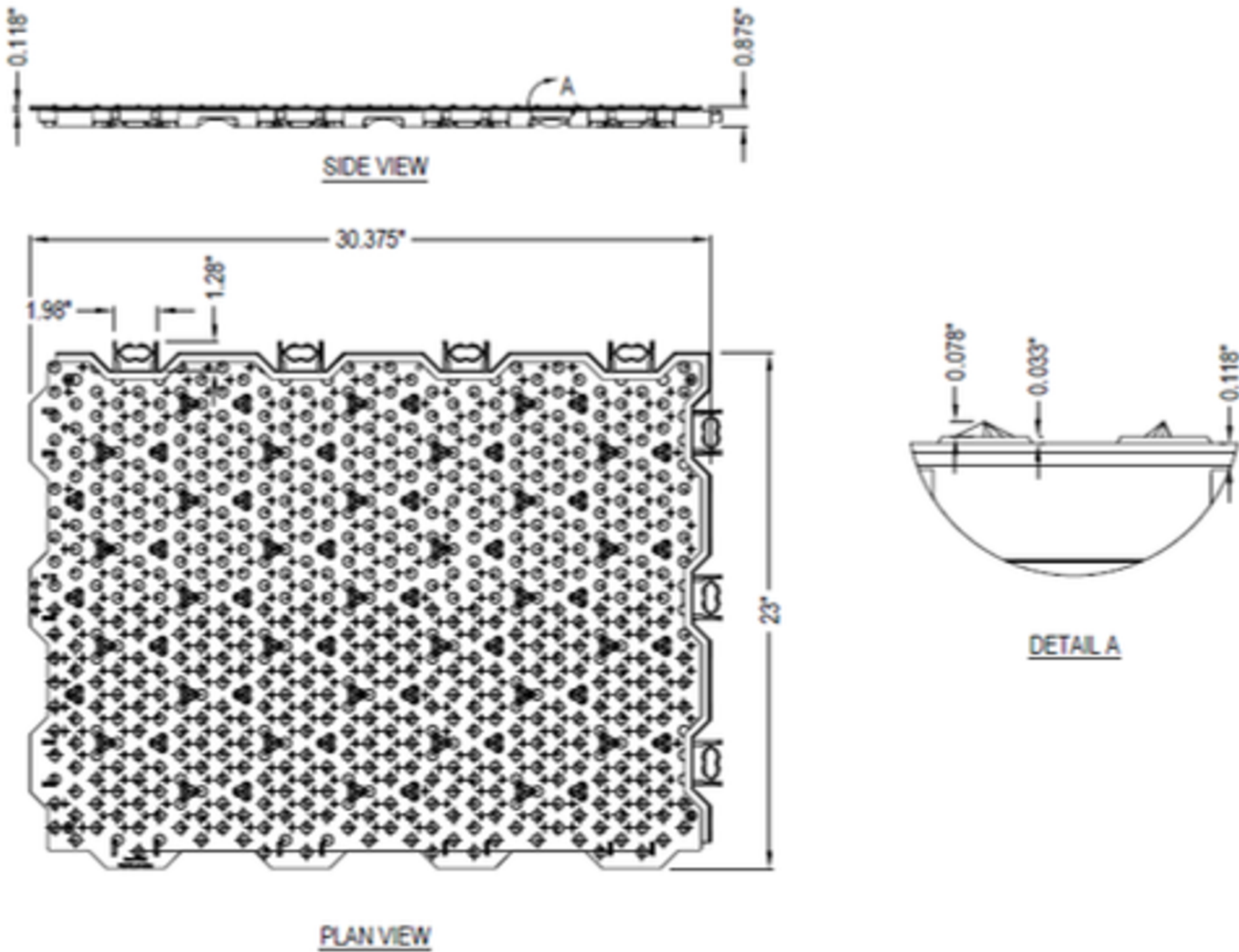


# VEGETATIVE ROOF UNDERLAYMENT

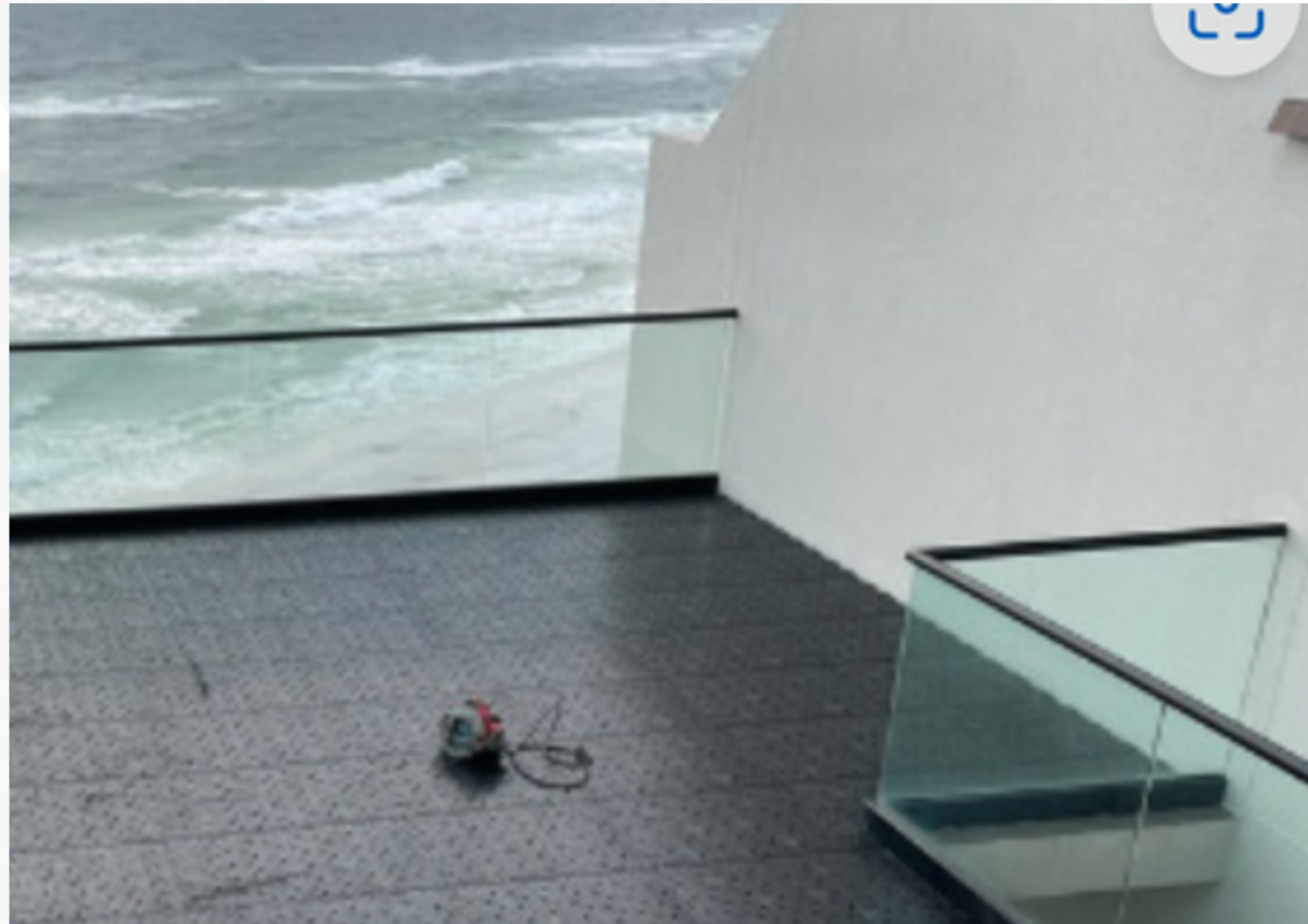


GEO-TEXTILE UNDERLAYMENT  
PROTECTS ROOF MEMBRANE IF NEEDED

INTERLOCKING DRAINAGE TILES PROVIDE  
SUBSTRATE FOR VEGETATIVE ATTACHMENT,  
ANTI-LIFT TECHNOLOGY.











### Vertical Locking System

The EasyLock patented vertical Drop & Lock system makes installations EASY.



### Expansion/Contraction

Our revolutionary patented design automatically accounts for expansion & contraction of the panels in any climate or season...set it once and it's done!



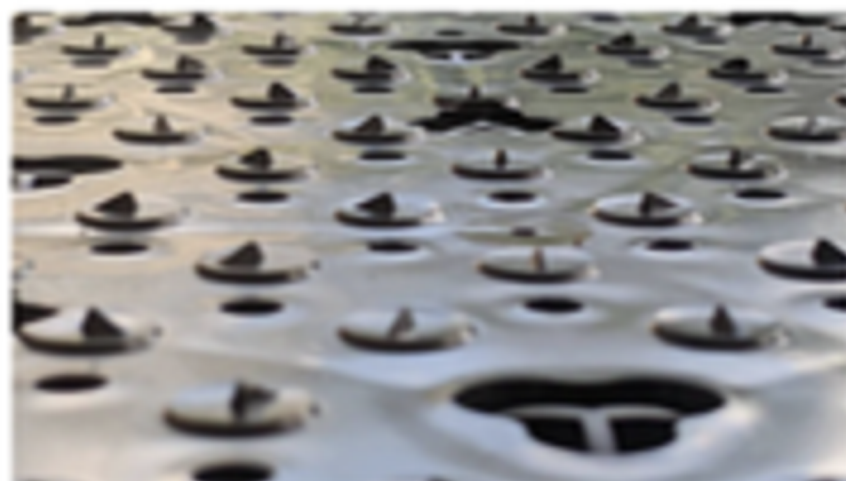
### Drainage

At over 4,000 inches per hour, our panels facilitate maximum drainage under any condition. Additionally, drainage channels on the surface encourages the flow of liquids, especially important in pet areas.



### Drainage Channels

The underside cell design allows for both water storage and the rapid horizontal movement of water on slopes or to a perimeter drain system (if required) through multi-directional drain channels.



### Turf Teeth

Hundreds of patented, multidirectional "turf teeth" grip the turf from every direction to eliminate turf slide.



### Cell Structure

The hexagonal underside cell structure resembles a honeycomb (one of nature's strongest and most efficient shapes) which uses the least amount of material to hold the maximum amount of weight.]





### Panel Alignment

The locking design creates perfect alignment from panel to panel, resulting in smooth surfaces for landscapes, pet areas, playgrounds, sports fields, and contoured putting greens.



### Webbed Feet

The underside structural ribs incorporate wider feet at the bottom to prevent the panels from sinking into the base over time.



### Remove & Replace

Our innovative design makes it easy to remove and replace ANY panel in mere seconds without sacrificing it. This is ideal for putting greens/golf cups, goalposts, playground structures, and necessary access points.



### Load Capacity

Our geometric patterns and high quality materials create incredible durability that can withstand heavy loads and high impact.



### Multi-Directional Installation

Our panels are not limited to one direction: to minimize waste, panels can be turned 90 degrees.





**STEP 1: GEOTEXTILE 3'  
ROLL**



## STEP 2: EASYLOCK TILE







## **STEP 3: VEGETATIVE TILES**





# WORKMANSHIP warranty

PROJECT DETAILS

project name

The undersigned hereby guarantees all of the work required and performed by the contract, (2) years (s) from the date shown on the final invoice. The contractor has/will also provide all manufacturer's written guarantees and warranties covering materials furnished under this contract upon satisfactory payment of material and installation.

**Jacqueline Wiener**

MEMBER

**date**

DATE



PRODUCT - 5-YEAR - LIMITED

# warranty

PROJECT DETAILS

project name

The undersigned hereby warrants that all products furnished under this contract are covered by a limited product warranty for a period of five (5) years from the date shown on the final invoice. The contractor shall also provide all applicable manufacturer's written guarantees and warranties covering materials supplied under this contract upon satisfactory payment for product and installation.

Jacqueline Wiener

MEMBER

date

DATE





FAUX PLANT & GREEN WALL  
EXTENDED WARRANTY OPTIONS



**MATERIAL 6-10 YEARS**

Whether it's a home installation or a commercial project, our extended warranty is designed to protect your investment and enhance the longevity of your green space. An extended limited material warranty gives added protection after the manufacturer warranty ends.



**LABOR UP TO 10 YEARS**

Our limited 5-year warranty from the manufacturer does not cover labor fees for repairs. Our plan enables you to know that for the duration of your purchased coverage, any labor costs associated with product or construction failure are also covered. Available for 5 or 10 years

**EXTENDED  
WARRANTY**

**\$ 35**

**5 YEAR LABOR COVERAGE**

\$35 one time cost per panel to cover associated labor costs with any warranty pay out.

**\$ 70**

**10 YEAR LABOR & LIMITED PRODUCT**

\$70 one time cost per panel to cover associated labor costs with any warranty pay out.

Includes labor for heights up to 10' high.  
10' or higher will incur a lift charge.

For more information or to schedule a cleaning, visit  
[upscapers.com](https://upscapers.com) or call 866-950-5769

©2023 MJ Treehouse Ventures LLC. All rights reserved.  
UpScapers - 204 Sparta St. McMinnville, Tn. 37110





**BEFORE**



**AFTER**

**FAUX PLANT & GREEN WALL  
CLEANING SERVICE**



**CLEANING**

Dust RX - A revolutionary faux plant and tree cleaner from UpScapers removes dust dirt and grime from silk and plastic plants, trees and their furnishings.



**INSPECTION & REPAIR**

Our technicians will inspect the condition of your faux foliage and manipulate plants that may have been disturbed back to a natural look. They will perform any minor repairs or provide a discounted replacement proposal if plants are damaged beyond repair.

**STAY FRESH  
PACKAGES**

**\$ 399**

**ANNUAL**

For up to 400 sq. ft. \$1 per sq. ft. over that.

**\$ 719**

**SEMI-ANNUAL**

\$399 for up to 400 sq. ft. \$1 per sq. ft. over that. Seasonal plant change out (\$200)

**\$ 1479**

**QUARTERLY**

For up to 400 sq. ft. \$1 per sq. ft. over that. Seasonal plant change out add \$400

Includes all materials up to 10' high.  
10' or higher will incur a lift charge.

For more information or to schedule a cleaning, visit [upscapers.com](https://upscapers.com) or call 866-950-5769